

An aerial photograph of Grady High School in Atlanta, Georgia. The image shows the school's main building complex on the left, a large stadium with tiered seating in the center, and a football field with yard lines and a goalpost on the right. In the background, a dense line of trees separates the school grounds from the Atlanta city skyline, which is visible under a clear sky. The entire image is presented in grayscale, except for a solid red vertical bar on the far left edge.

Weekly Construction Progress Report

Grady High School

Week Ending: 12/18/2020

PARRISH
CONSTRUCTION GROUP

Weekly Updates

THIS WEEK

- MEP overhead on Second floor of new addition.
- MEP overhead on Third floor of new addition.
- Continue CMU walls on the fourth floor of the new addition.
- Continue Fire Sprinkler Third Floor.
- Plumbing Rough-in fourth floor.
- Continued exterior metal framing and sheathing.
- Granite Installation at North Elevation
- Hang, Tape, and Finish Gypsum Board
- Continue Brick Install at South and East Corner of New Addition.
- Firestopping Second, and Third Floor of New Addition.
- Waterproofing applied on North, and West side of new addition.
- Blockfill Third Floor of New Addition.
- Completed tie-in Fire Meter Vault and Hydrant off C. Allen Drive.
- Begin TPO Roof at Bridge, Stair 1, and C. Allen building Low Roof.

NEXT WEEK – 12.21.2020 – 12.25.2020

- Complete CMU walls on the fourth floor of the new addition.
- Continue MEP overhead and rough-in on Second, Third, and Fourth floors of the new addition.
- Continue brick Install South and East Corner.
- Continue Waterproofing at New Addition.
- Continue interior and exterior metal framing.
- Continue Exterior Sheathing and Waterproofing at New Addition.
- Continue Firestopping Second and Third Floor of New Addition.
- Continue granite Installation at West Elevation.
- Continue Installing Gypsum Board on First and Second Floor of New Addition.
- Continue TPO Roof at Bridge, Stair 1, and Charles Allen Building Low Roof.



Budget & Schedule

BUDGET

Construction Budget

- \$34,900,000.00

Budget Status

- \$ 20,122,064.79

SCHEDULE

Completion Date

- July 29,2021

Schedule Status

- On Schedule



ADDITIONAL INFO

- Scheduled Substantial Completion Date
 - July 29, 2021
- Completed By
 - Will Henry, PCG
- Copies To
 - Danny Gutlay, APS
 - Sandra Horton, APS
 - Katy Daugharty, CC
 - Bob Just, CC
 - Jim Fallon, PCG
 - Darrell Bailey, PCG
 - Alex Johnson, PCG
 - Will Henry, PCG
 - Art Cofelice, PCG
 - Travis Disbro, PCG



Photo Updates

New Addition Progress – North Elevation



New Addition Progress – South Elevation



Photo Updates

Switchgear Installed in Main Electrical Room



Transfer Switches and Electrical Panels Installed



Photo Updates

Metal Framing Progress in Media Center

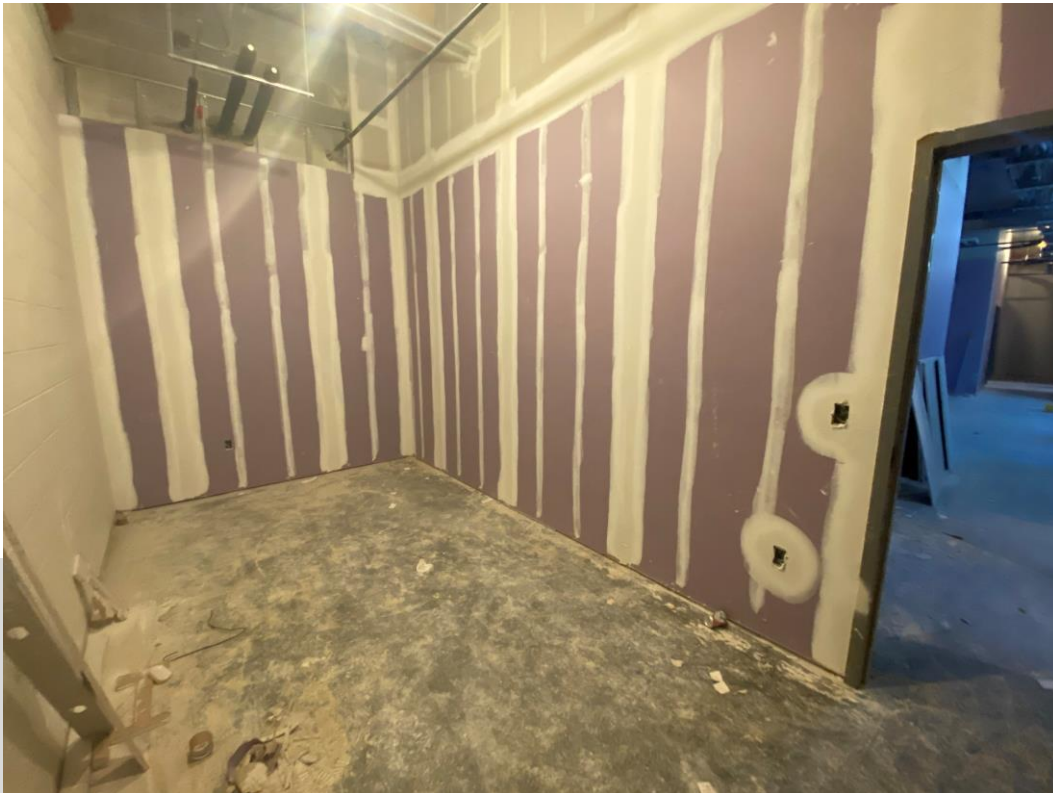


Gypsum Board Wall Progress 1st Floor of New Addition



Photo Updates

Counseling Office Progress



Counseling Area Progress



Photo Updates



Metal Framing Progress in Restroom



Block fill Completed on 3rd Floor of New Addition

